



Industrial Printers

ZX400+ / ZX400i+ Series

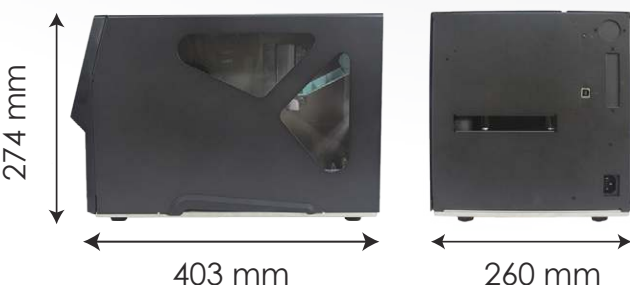
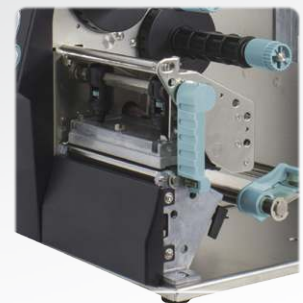


Power & Precision in One Compact Design

Small in size and powerful in performance. Upgraded Flash and SDRAM enable the ZX400(i)+ series to withstand more difficult printing conditions. Multiple interfaces and optional WiFi & Bluetooth connections make the ZX400(i)+ suitable for most application environments.

Die-Cast Printing Mechanism

The ZX400(i)+ printing mechanism is made with a diecast design, providing strong durability and making it capable of long term label printing requirements.



Small Footprint

403 mm (Length) x 260 mm (Width)
small footprint with industrial efficiency;
ideal for users who need to consider
the use of space.



1 Inch Label Roll Holder

The strong die-cast label roll holder can support a 1 inch label core, allowing “desktop” printer users to operate the ZX400(i)+ series without having to purchase another type of label.



Specification

2024/08/08

Model				
	ZX420+	ZX430+	ZX420i+	ZX430i+
Print Method	Thermal Transfer / Direct Thermal			
Resolution	203 dpi (8 dots/mm)	300 dpi (12 dot/mm)	203 dpi (8 dots/mm)	300 dpi (12 dot/mm)
Print Speed	Up to 6 ips (152 mm/s)	Up to 5 ips (127 mm/s)	Up to 6 ips (152 mm/s)	Up to 5 ips (127 mm/s)
Print Width	4.25" (108 mm)	4.16" (105.7 mm)	4.25" (108 mm)	4.16" (105.7 mm)
Print Length	Min. 0.12" (3 mm)** ; Max . 279.53" (7100 mm)	Min. 0.12" (3 mm)** ; Max. 125.98" (3200 mm)	Min. 0.12" (3 mm)** ; Max . 279.53" (7100 mm)	Min. 0.12" (3 mm)** ; Max. 125.98" (3200 mm)
Processor	32 Bit RISC CPU			
Memory	Flash	128 MB(Free for user storage 34 MB)		
	SDRAM	128 MB		
Sensor Type	Adjustable reflective sensor and transmissive sensor, left aligned			
Media	Type	Continuous form, gap labels, black mark sensing, and punched hole; label length set by auto sensing or programming		
	Width	Tear : Min. 1" (25.4 mm) – Max. 4.65" (118 mm) Cutter : Max. 4.61" (117 mm) Dispenser : Max. 4.33" (110 mm)		
	Thickness	Min. 0.0024" (0.06 mm) – Max. 0.01" (0.25 mm)		
	Label roll diameter	Max. 8" (203.2 mm) with 3" (76.2 mm) core Max. 6" (152.4 mm) with 1.5" (38.1 mm) core Max. 5" (127 mm) with 1" (25.4 mm) core		
	Core diameter	Min. 1 " (25.4 mm) – Max. 3" (76.2 mm)		
Ribbon	Types	Wax, wax/resin, resin		
	Length	Max. 1476' (450 m)		
	Width	Min. 1.18" (30 mm) – Max. 4.33" (110 mm)		
	Ribbon roll diameter	3" (76.2 mm)		
	Core diameter	1" (25.4 mm)		
Printer Language	EZPL, GEPL, GZPL, GDPL auto switch			
Software	Label design tool	GoLabel II (for EZPL only) (Windows)		
	Management tools	GoTools (Windows / Android / iOS) GoUtility (Windows)		
	APP	GoAPP (Android / iOS)		
Driver	Windows 7, Windows 8 & 8.1, Windows 10, Window11, Windows Server 2008 R2, 2012, 2012 R2, 2016, 2019, 2022, MAC, Linux			
SDK	Win CE, .NET, Windows 7, Windows 8 & 8.1, Windows 10, Windows 11, Android, Mac, iOS			
Resident Fonts	Bitmap fonts	6, 8, 10, 12, 14, 18, 24, 30, 16X26 and OCR A & B 0°, 90°, 180°, 270° rotatable, single characters 0°, 90°, 180°, 270° rotatable 8 times expandable in horizontal and vertical directions		
	TTF Fonts	(Bold / Italic / Underline) 0°, 90°, 180°, 270° rotatable Internal TTF Fonts x5 : Traditional Chinese, Simplified Chinese, Japanese, Korean, Western languages		

Download Fonts	Bitmap fonts	0°, 90°, 180°, 270° rotatable, single characters 0°, 90°, 180°, 270° rotatable	
	Asian fonts	16x16, 24x24. Traditional Chinese (BIG-5), Simplified Chinese(GB2312), Japanese(S-JIS), Korean (KS-X1001) 0°, 90°, 180°, 270° rotatable and 8 times expandable in horizontal and vertical directions	
	TTF fonts	(Bold / Italic / Underline) 0°, 90°, 180°, 270° rotatable	
Barcodes	1-D Bar codes	China Postal Code, Codabar, Code 11, Code 32, Code 39, Code 93, Code 128 (subset A, B, C), EAN-8/EAN-13 (with 2 & 5 digits extension), EAN 128, FIM, German Post Code, GS1 DataBar, HIBC, Industrial 2 of 5, Interleaved 2-of-5 (I 2 of 5), Interleaved 2-of-5 with Shipping Bearer Bars, ISBT-128, ITF 14, Japanese Postnet, Logmars, MSI, Postnet, Plessey, Planet 11 & 13 digit, RPS 128, Standard 2 of 5, Telepen, Matrix 2 of 5, UPC-A/UPC-E (with 2 or 5 digit extension), UCC/EAN-128 K-Mart, Random Weight and Pharmacode	
	2-D Bar codes	Aztec code, Code 49, Codablock F, Datamatrix code, MaxiCode, Micro PDF417, Micro QR code, PDF417, QR code, TLC 39, GS1 Composite, DotCode, Marco PDF 417	
Code Pages	Codepage 437, 737, 850, 851, 852, 855, 857, 860, 861, 862, 863, 865, 866, 869 Windows 1250, 1251, 1252, 1253, 1254, 1255, 1257 Unicode UTF8, UTF16BE, UTF16LE		
Graphics	Resident graphic file types are BMP and PCX, other graphic formats are downloadable from the software		
Interfaces	<ul style="list-style-type: none"> • USB 2.0 (Type B) • USB Host (Type A) 		<ul style="list-style-type: none"> • USB 2.0 (Type B) • Serial Port (RS232) • Ethernet 10/100 Mbps • USB Host (Type A)
Real Time Clock	Standard		
Control Panel	<ul style="list-style-type: none"> • 1 Power on/ standby button with green color LED backlight • 1 Calibration button at rear panel • 1 Control key : FEED / PAUSE / CANCEL with dual color LED backlight : Ready (Green); Error (Red) 		<ul style="list-style-type: none"> • Color TFT LCD with navigation button • 1 Power on/standby button with green color LED backlight • 1 Calibration button at rear panel • 1 Control key : FEED / PAUSE / CANCEL with dual color LED backlight: Ready (Green); Error (Red)
Power	Auto Switching 100-240VAC, 50-60Hz.		
Environment	Operation temperature	41° F to 104° F (5° C to 40° C)	
	Storage temperature	-4° F to 140° F (-20° C to 60° C)	
Humidity	Operation	20-85%, non-condensing.	
	Storage	10-90%, non-condensing.	
Agency Approvals	CE (EMC)、FCC Class B、CB、cULus、ICES-003、UKCA、BSMI、ENERGY STAR ***		
Dimension	Length	403 mm (15.9")	
	Width	260 mm (10.2")	
	Height	274 mm (10.8")	
Weight	10.8 Kg (23.81lbs), excluding consumables		
Options	Cutter module (Dealer Install) Parallel port adaptor module (Centronic female 36-pin)(Dealer Install) WiFi (IEEE 802.11 b/g/n) and BT (BLE 5.0) combo module (Dealer Install) External label rewinder Label Dispenser (Dealer Install)		

* Specifications are subject to change without notice. All company and/or product names are trademarks and/or registered trademarks of their respective owners.

** Minimum print height and maximum print speed specification compliance can be dependent on non-standard material variables such as label type, thickness, spacing, liner construction, etc. Godex is pleased to test non-standard materials for minimum print height, and maximum print speed capability.

*** The safety certification marks may be different depending on sales regions.

Applications

Applications for Labels & Barcodes

ZX400+ /ZX400i+ Series is extremely versatile and can be used for most applications.



Retail

price tags, content labels, receipts for registered mail, postage labels, etc.



Warehouse

shelf labels, product labels, stocking management, exterior/pallet labeling, etc.



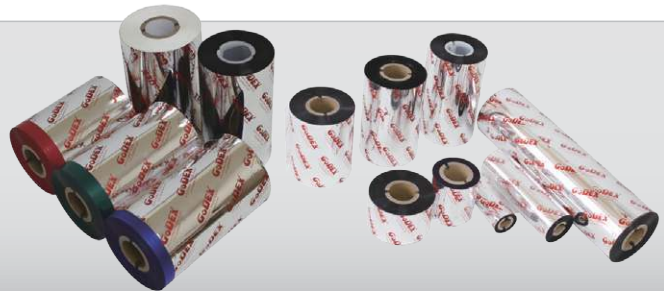
Manufacturing

product labels, manufacturing labels, exterior/pallet labels, trade, stocking and document management, etc.

GoDEX RIBBONS

Godex offers premium thermal transfer ribbons that will fit most of your printing applications.

- Wax
- Wax/ Resin
- Resin
- Near Edge



GoDEX SOFTWARE



GoLabel II is based on a WYSIWYG (what you see is what you get) user interface, making everything so easy for users to create and print barcode labels.

GoLabel II is the first-choice in label design software, and all you need to start creating your own labels today!



Forget about installing complicated software, GoTools will show you the easiest way.



GoUtility can help users monitor GoDEX's printer status and deploy data to multiple printers through a concise user interface at the same time.